



Paul Smith x Tom Hammick

Miles To Go Before I Sleep

Paul Smith x Tom Hammick

Miles To Go Before I Sleep

Paul has been a follower and avid collector of Tom's work for many years, but it was only in November 2019 that they finally met in person at Paul's studio in Covent Garden. Tom was able to share an extensive assortment of his work at the meeting, and the conversation quickly came to the exciting idea for an exhibition at Paul Smith No.9 Albemarle Street.

The collaboration was a natural fit with print being a medium that both Tom and Paul share as a signature part of their work, as well as a great appreciation of the use of colours and combining them in playful variations.

Whilst Tom draws great inspiration from his everyday life, he is also very inspired by myth, literature, music and poetry that shape the narrative of his works. The title of the Paul Smith exhibition *Miles To Go Before I Sleep* is taken from a poem called 'Stopping by Woods on a Snowy Evening' by Robert Frost.



**The woods are lovely, dark and deep,
But I have promises to keep,
And miles to go before I sleep,
And miles to go before I sleep**”

To accompany the exhibition both Tom and Paul have produced new and exclusive items to celebrate their collaboration. Tom has produced two new limited edition reduction woodcut prints, 'Arrival at the Ball' and 'Full Sail', both exclusive to Paul Smith. And Paul has designed a small collection of silk accessories, two pocket squares and a scarf, that feature some of Tom's artwork that will be part of the show.

The curation of the show is inspired by Paul and his sources of inspiration; his travels, curiosity, a sense of adventure and exploration of the world. These are all prevalent themes in Tom's work that feature himself, family, friends and fictional figures boarding boats, automobiles, planes and even rocket ships to places both real and fantasy. Ideas that seem more poignant now than ever during these recent times, with a hope to provide a sense of freedom and encourage our imaginations.

**Artworks available at
No. 9 Albemarle St**

All prices are inclusive of frame and VAT



Airline Ticketing, 1999

£1,600

Edition variable etching with aquatint printed in colours

Sheet size: 52 × 58 cm

Edition of 25



Arrival at Racedown, 2019

£1,200

Edition variable reduction woodcut printed in colours

Sheet size: 49 × 33.5 cm

Edition of 25



Arrival at the Ball, 2020

£975

(£780 unframed editions)

Edition variable reduction woodcut printed in colours

Sheet size: 60 × 45 cm

Edition of 25

Exclusive to Paul Smith

Unframed inventory: E.V 5/25 to 10/25 and 12/25 to 25/25



Full Sail, 2020

£975

(£780 unframed editions)

Edition variable reduction woodcut printed in colours

Sheet size: 60 × 45 cm

Edition of 25

Exclusive to Paul Smith

Unframed inventory: E.V 6/25 to 25/25



Cloudy Mountain, 2015

£1,080

Edition variable reduction woodcut printed in colours

Size: 42 × 48.5 cm

Edition of 25



Cuxhaven Packet, 2019

£1,500

Edition variable reduction woodcut printed in colours

Sheet size: 39 × 49 cm

Edition of 5



Dawn, 2018

£3,200

Edition variable reduction woodcut printed in colours

Sheet size: 70 × 53 cm

Edition of 15



Day and Night, 2019

£1,200

Edition variable etching with aquatint and sugar lift printed in colours

Sheet size: 50 × 40 cm

Edition of 30



Day and Night, 2019

£1,200

Edition variable etching with aquatint and sugar lift printed in colours

Sheet size: 50 × 40 cm

Edition of 30



Honeyed World, 2019

£1,150

Edition variable reduction woodcut printed in colours

Sheet size: 33 × 49 cm

Edition of 25



Horse and Boy, 2019

£1,150

Edition variable reduction woodcut printed in colours

Sheet size: 49 × 33.5 cm

Edition of 25



Konstanze's Freedom, 2020

£5,760

Edition variable reduction woodcut printed in colours

Sheet size: 97 × 141 cm

Edition of 15



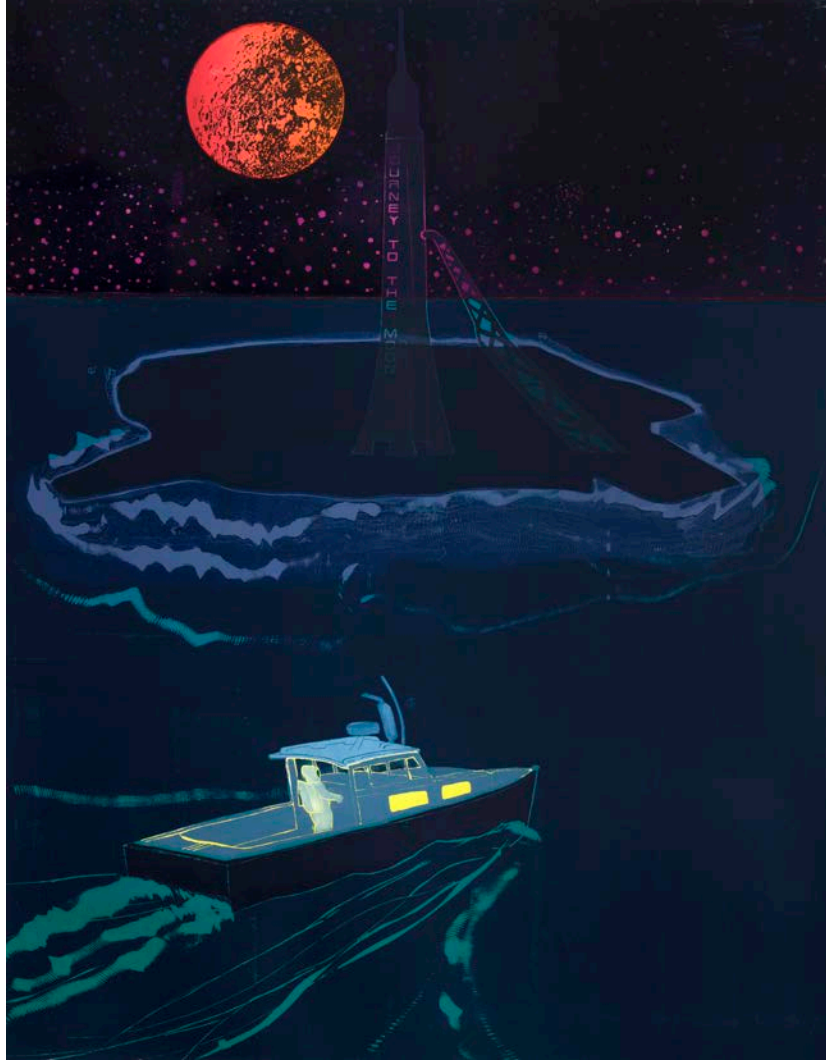
Lunography, 2017

£11,000

Edition variable reduction woodcut printed in colours

Sheet size: 166 × 122 cm

Edition of 16



Wake, 2017

£8,900

Edition variable reduction woodcut printed in colours

Sheet size: 152.5 × 119.5 cm

Edition of 16



Night Comes, 2019

£900

Edition variable reduction woodcut printed in colours

Sheet size: 25 × 33 cm

Edition of 20



The Night is a Starry Dome, 2019

£1,500

Etching printed in colours

Sheet size: 54 × 44 cm

Edition of 30



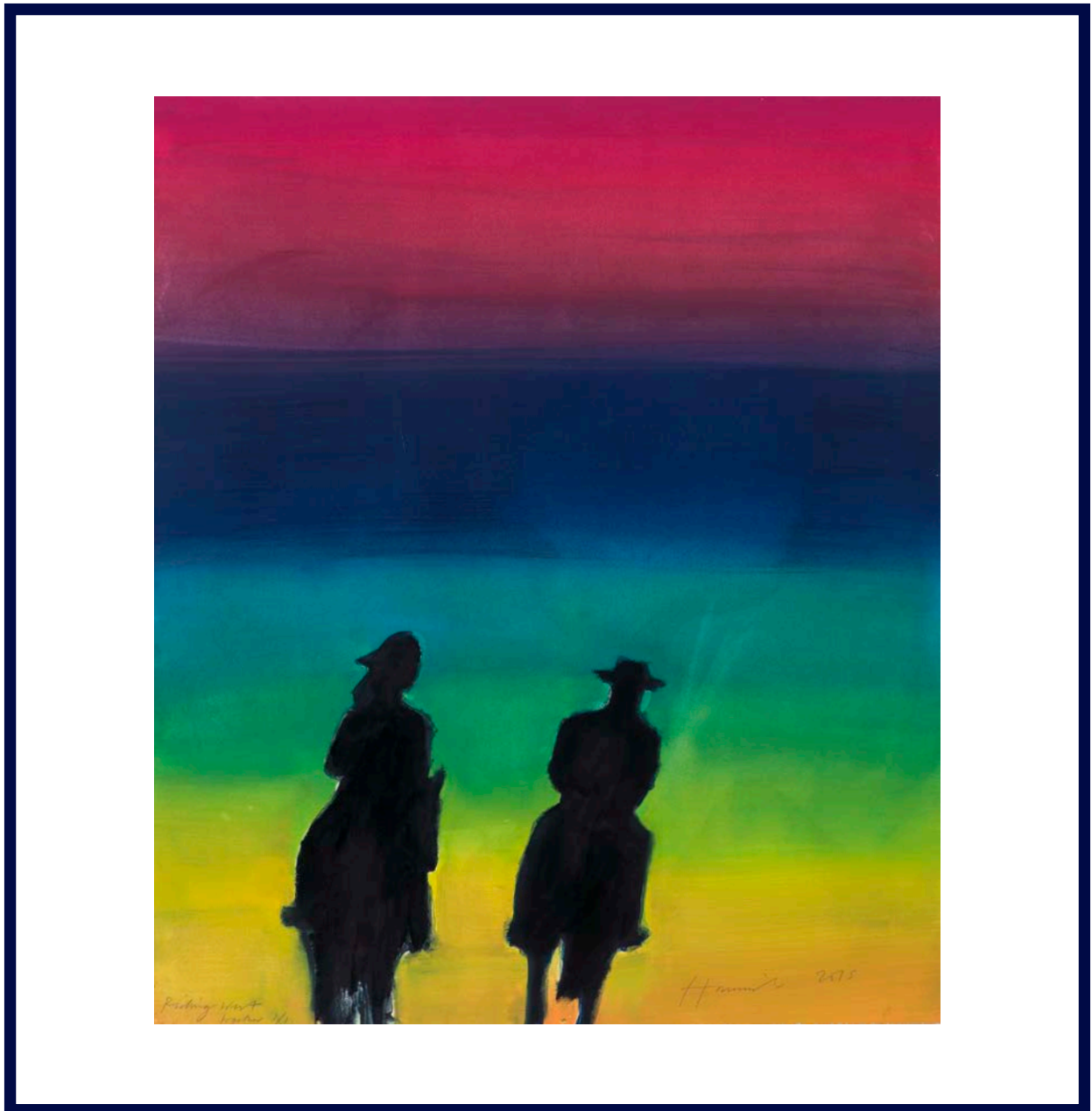
Night Train, 2004

£2,220

Edition variable etching and aquatint printed in colours

Sheet size: 30 × 36 cm

Edition of 25



Riding West, 2015

£2,750

Monotype printed in colours

Sheet size: 77 × 64.5 cm

Edition of 1



Sweet-Screaming, 2019

£960

Edition variable reduction woodcut printed in colours

Sheet size: 29 × 36 cm

Edition of 20



Coleridge Bird, 2019

£1,150

Edition variable reduction woodcut printed in colours

Sheet size: 33 × 38 cm

Edition of 22



The Sociable Time, 2019

£960

Edition variable reduction woodcut printed in colours

Sheet size: 25 × 33 cm

Edition of 23



Vision of Completeness, 2019

£1,125

Edition variable reduction woodcut printed in colours

Sheet size: 37.5 × 29 cm

Edition of 22



Set Sail by Silent Moonlight, 2019

£1,500

Edition variable reduction woodcut printed in colours

Sheet size: 55 × 36 cm

Edition of 22



Narrow Road to the Deep North, 2019

£2,250

Edition variable etching with aquatint and chine collé

Sheet size: 68 × 56 cm

Edition of 30



Red Run, 2019

£12,840

Edition variable reduction woodcut printed in colours

Sheet size: 153 × 122 cm

Edition of 8



Sky Garden, 2018

£15,000

Edition variable reduction woodcut printed in colours

Sheet size: 120 × 400 cm

Edition of 7



Waiting for Time, 2016

£18,960

Edition variable reduction woodcut printed in colours

Sheet size: 122 × 163 cm

Edition of 10



Waiting for Time II, 2016

£3,850

Edition variable reduction woodcut printed in colours

Sheet size: 60 × 80 cm

Edition of 15



Yellow Lake, 2005

£8,750

Edition variable reduction woodcut printed in colours

Sheet size: 110 × 155 cm

Edition of 10



Island Studio & Night and Day, 2020

£30,000

Double sided wooden screen with two edition
variable woodcuts printed in colours

Screen size: 201 × 386.24 cm

Edition of 3

Artworks available on the Paul Smith website

All prices are for unframed prints and include VAT



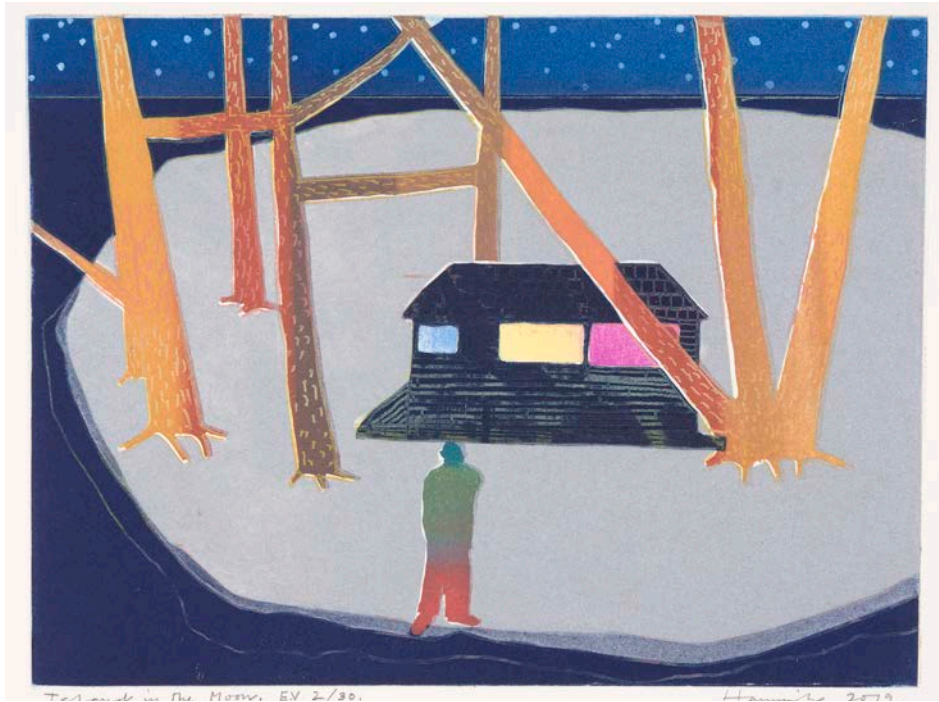
Sunday Morning, 2018

£3,600

Edition variable reduction woodcut printed in colours

Sheet size: 70 × 53 cm

Edition of 15



Island in the Moon, 2019

£1,320

Edition variable etching printed in colours

Sheet size: 44 × 54 cm

Edition of 30

Unframed inventory: E.V 2/30, 5/30, 9/30, 27/30



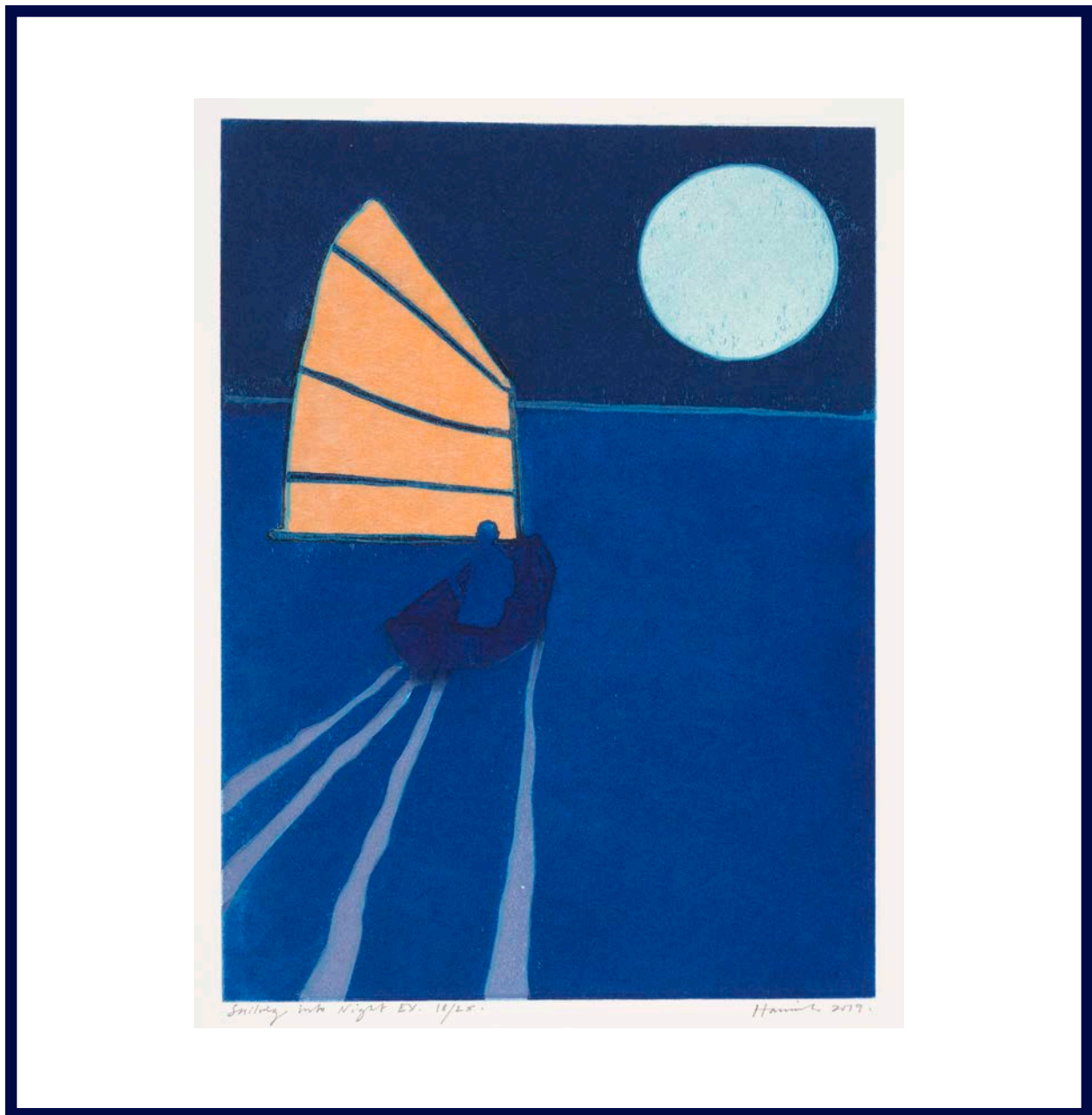
Frost at Midnight, 2019

£1,320

Edition variable reduction woodcut printed in colours

Sheet size: 46 × 51 cm

Edition of 25



Sailing Into Night, 2019

£1,320

Edition variable etching printed in colours

Sheet size: 53.5 × 43 cm

Edition of 25

Accessories



‘Night and Day’ Print Silk Scarf

£140

Created in collaboration with artist Tom Hammick for his No.9 Albemarle St exhibition, this 100% silk scarf is made in Italy and features a print from Hammick’s artwork ‘Night and Day’.

Finished with a Paul Smith x Tom Hammick logo and stitched edges.

Product Code: M1A-641FX-ES01-47-0



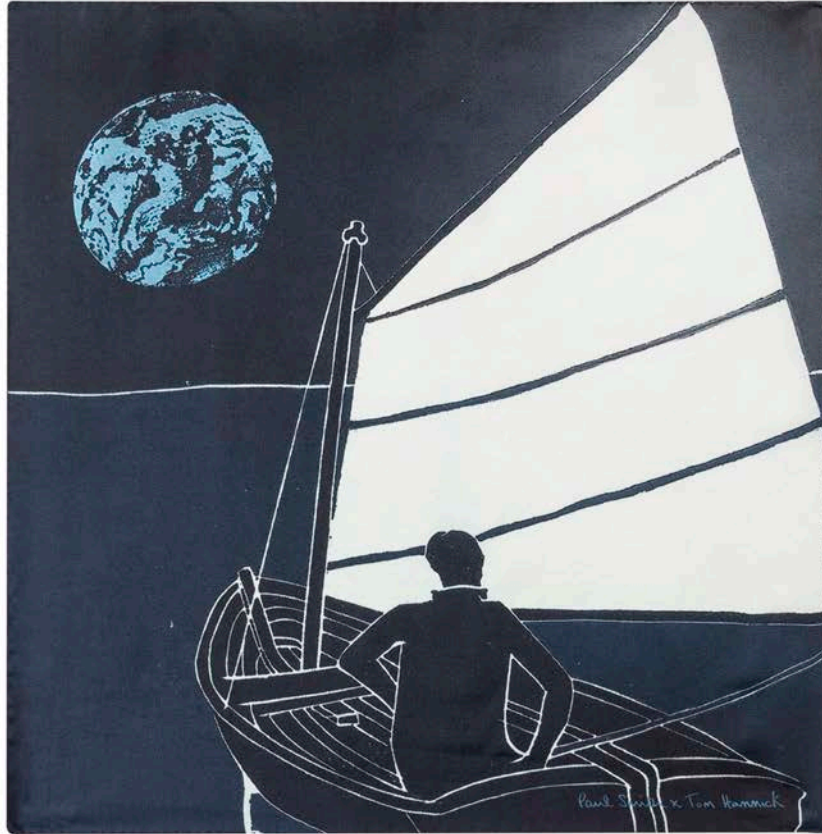
‘Horse and Boy’ Print Silk Pocket Square

£50

Created in collaboration with artist Tom Hammick, this 100% silk pocket square is made in Italy and features a ‘Horse and Boy’ print.

Finished with a Paul Smith x Tom Hammick logo and rolled, stitched edges.

Product Code: M1A-642FX-ES01-42-0



‘Set Sail by Silent Moonlight’ Print Silk Pocket Square

£50

Created in collaboration with artist Tom Hammick, this 100% silk pocket square is made in Italy and features a ‘Set Sail by Silent Moonlight’ print.

Finished with a Paul Smith x Tom Hammick logo and rolled, stitched edges.

Product Code: M1A-642FX-ES01-47-0

Paul Smith x Tom Hammick

For all sales enquiries, please contact
Interiors@paulsmith.co.uk